

# Play your part, keep your school safe!



Stay at home if you have symptoms of coronavirus and:

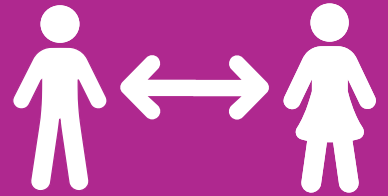
- You must tell your school if you have symptoms or have tested positive
- self-isolate for 10 days from when your symptoms start
- arrange to have a COVID-19 test
- avoid contact with other household members as much as possible



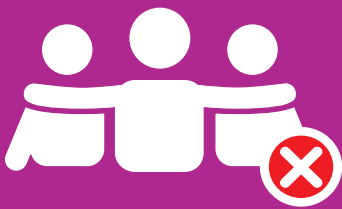
Wash your hands regularly with soap and water or use hand sanitiser



Wear your face covering in communal areas and on school and public transport  
\*exemptions apply



Maintain social distancing at all times



Avoid hugging and contact with others



Use a tissue or your arm when you cough or sneeze



Avoid touching your eyes, mouth and face with your hands

Please tell your school if you have symptoms or have tested positive

CORONAVIRUS

**PROTECT  
YOURSELF  
& OTHERS**

For up to date information  
on staying safe at school go to  
[leicester.gov.uk/  
staysafeatschool](https://leicester.gov.uk/staysafeatschool)



Leicester  
City Council